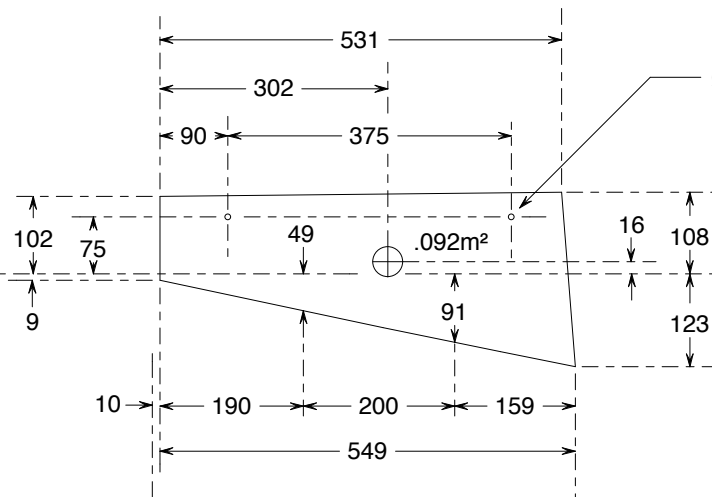


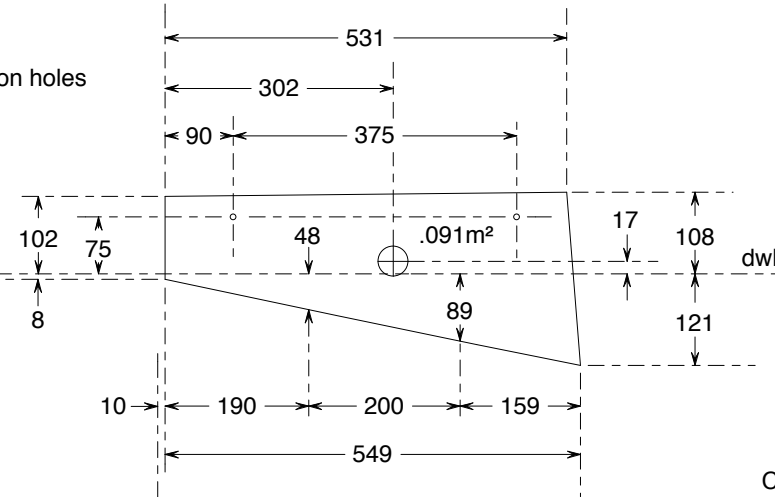
Position
-5990

Outboard Well Sides
Inboard Layer
12mm ply



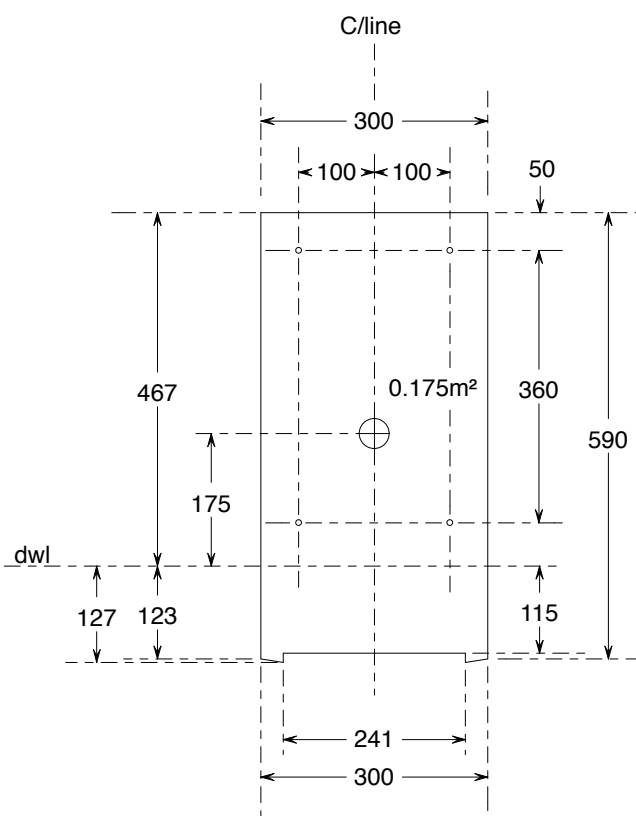
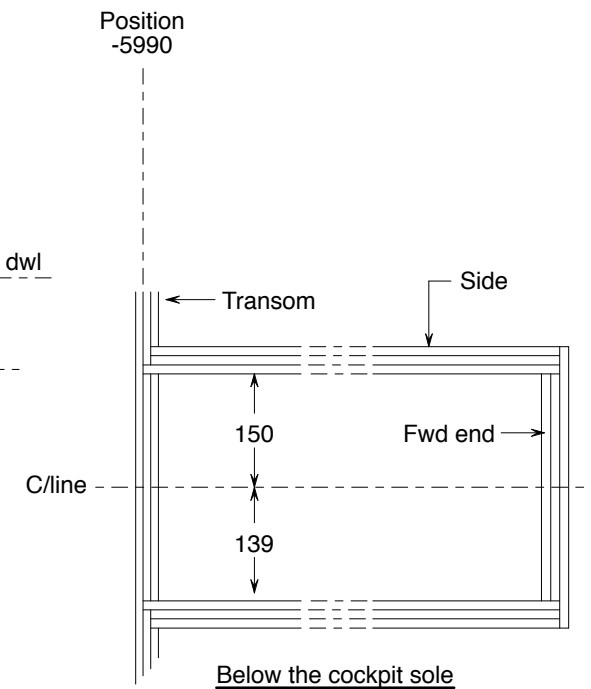
Position
-5990

Outboard Well Sides
Middle Layer
12mm ply

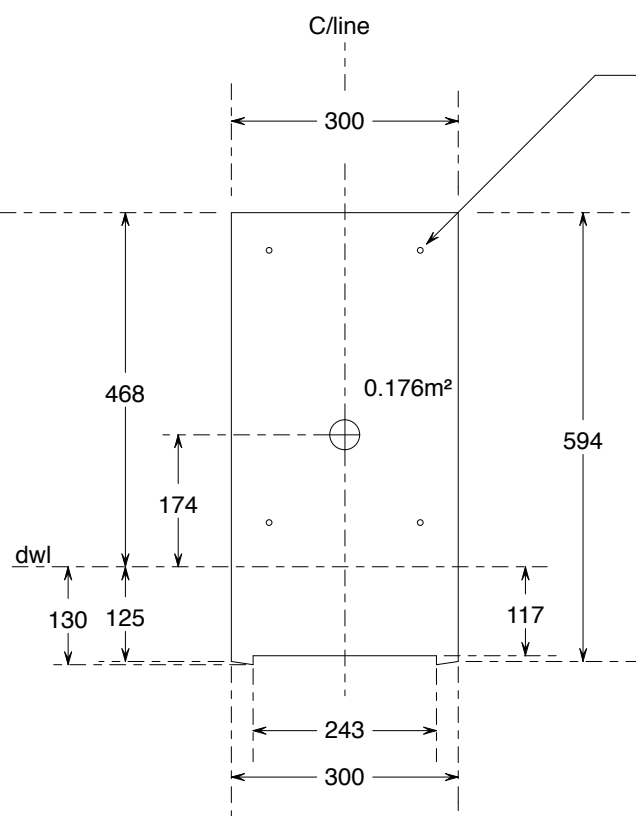


Position
-5990

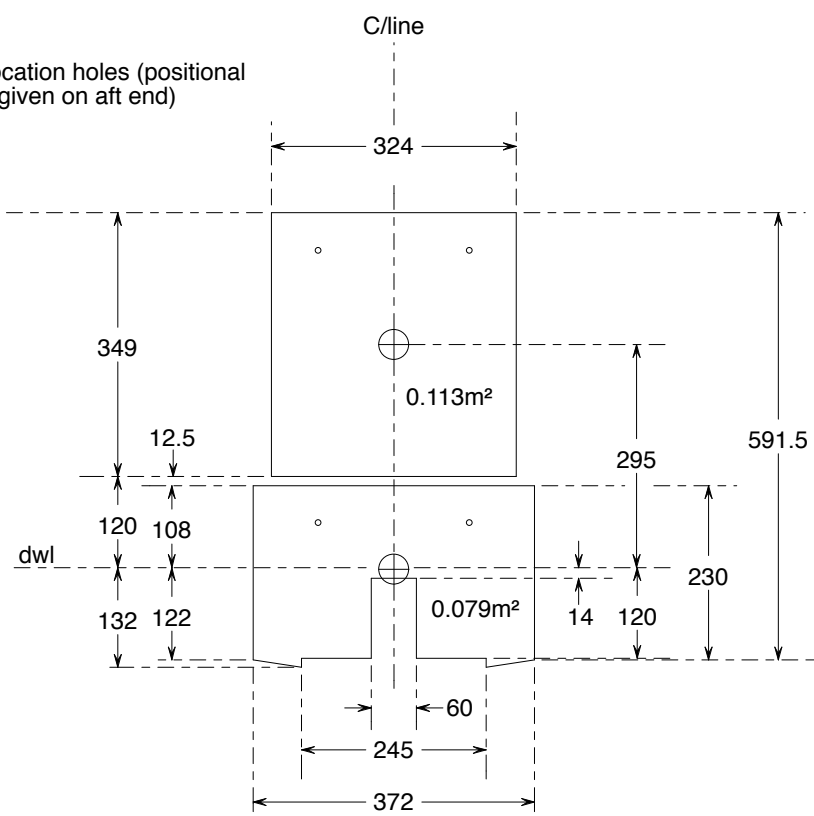
Outboard Well Sides
Outboard Layer
12mm ply



Outboard Well Fwd End
Aft Layer
12mm ply



Outboard Well Fwd End
Mid Layer
12mm ply



Outboard Well Fwd End
Aft Layer Bottom Part
12mm ply

⊕ Indicates Centre of Gravity
CoG of fwd end bottom
part is at dwl -2

Notes:

The width of the outboard well fwd end (bottom part) is based on the outboard well sides being 3 layers of 12mm ply. If the actual ply used is thicker, increase width to suit.

Similarly the outboard well fwd end (top part) is based on the outboard well sides being 1 layer of 12mm ply. If the actual ply used is thicker, increase width to suit.

Also, the width of the slot in the bottom part (for the backbone) is based on six layers of 12mm ply. If the actual ply used for the backbone is thicker, increase width of slot.

Fwd end is angled aft at 4.5°. Top edges are flush, so on developed shapes as shown, dwl will be at differing heights from the top edges.

Whisstock boats and boat plans support@whisstock.com	Scale	1/10
	Date	05 Sep 2018
	Plan No.	177/006/001
	Issue No.	01
	All dimensions in millimetres unless otherwise noted	

© Debenriver Ltd 2018 All Rights Reserved