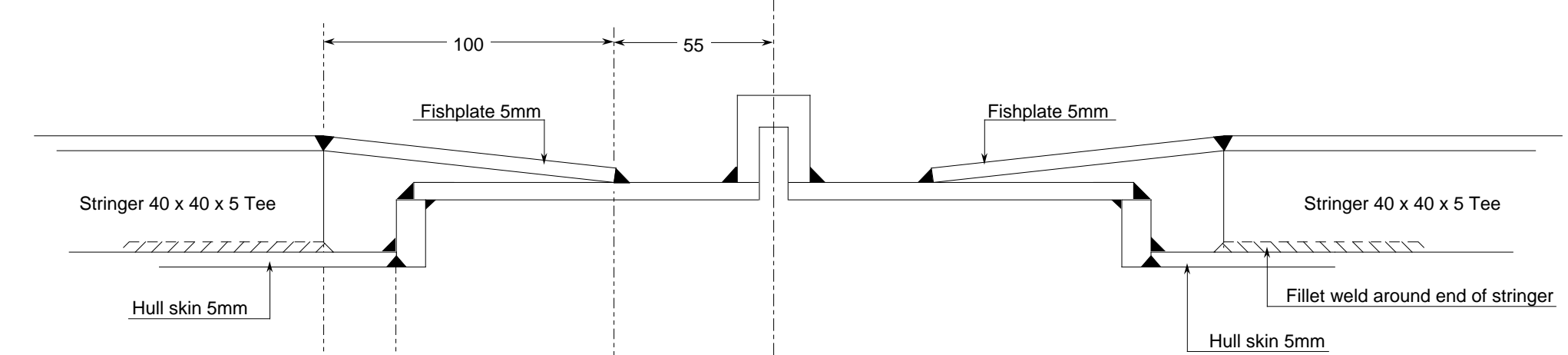
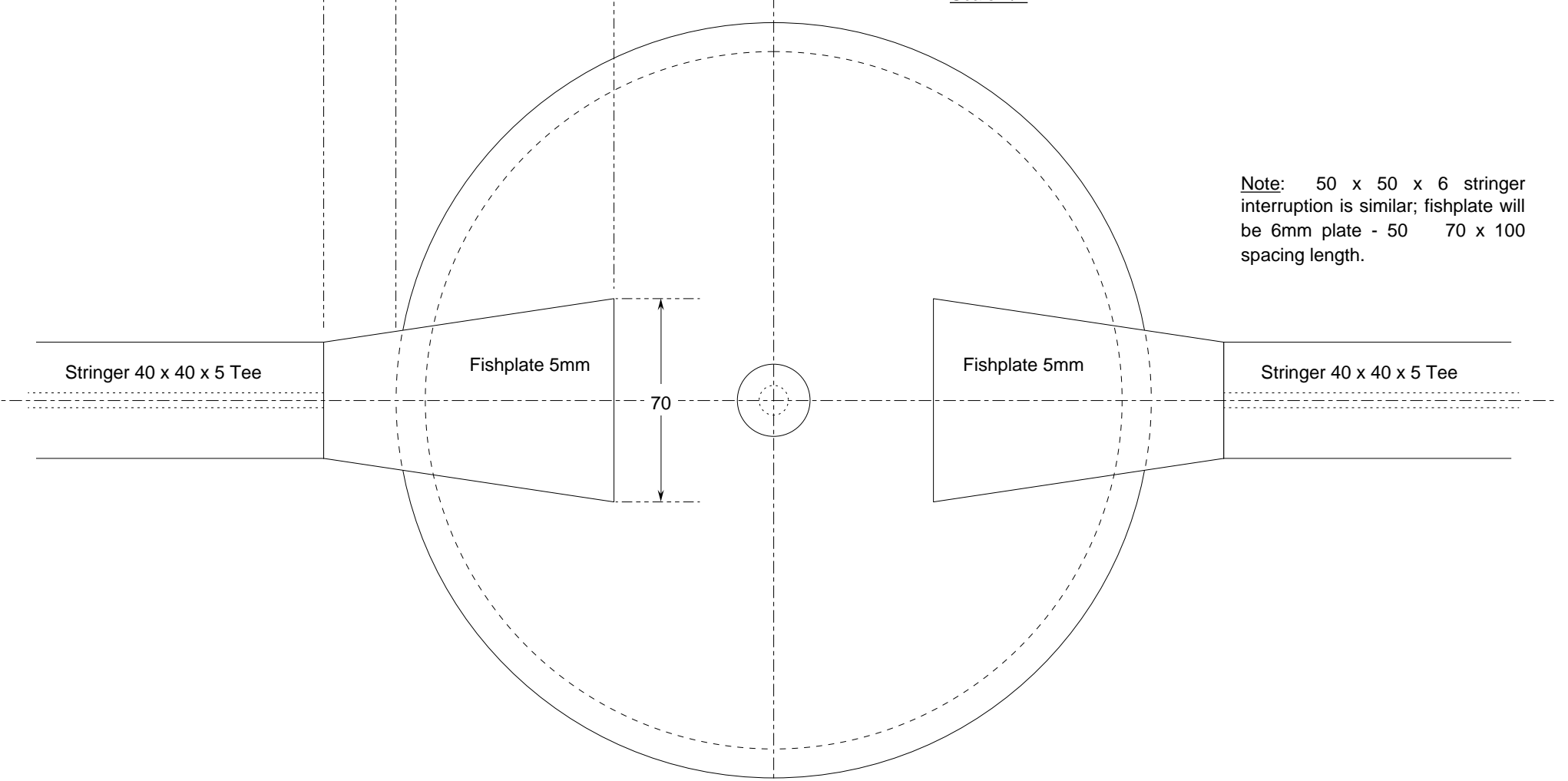


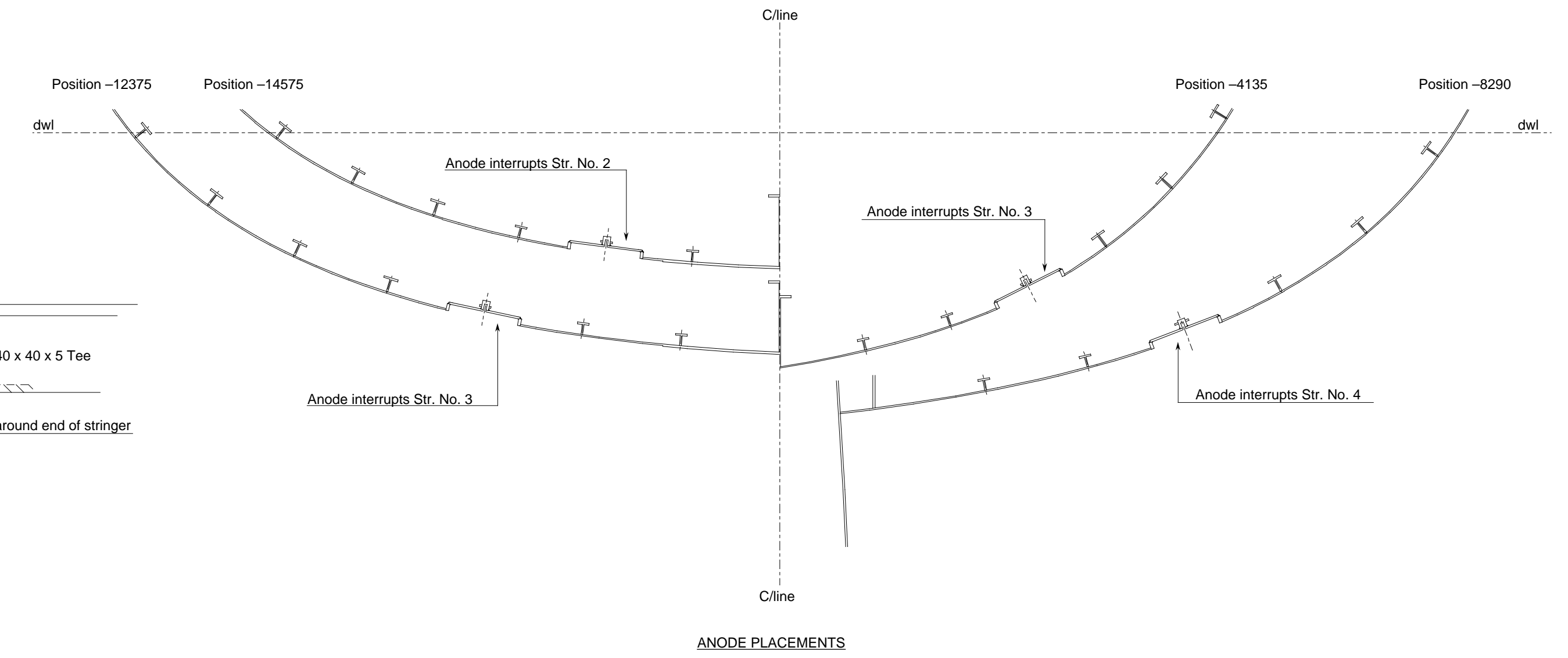
DETAIL OF ANODE INSERTS  
Scale 1/2



DETAIL OF STRINGER INTERRUPTION  
IN WAY OF ANODE INSERTS  
Scale 1/2



Note: 50 x 50 x 6 stringer interruption is similar; fishplate will be 6mm plate - 50 70 x 100 spacing length.



Notes:

- All measurements and dimensions are in millimetres unless noted otherwise.
- The Zero Point is the intersection of the Datum Waterline (marked "dwl") and the forefoot.
- The centreline is marked "C/line".
- Offsets are measured about centreline.
- Heights are measured above or below (marked "-") the dwl.
- Positions are measured forward and aft (marked "-") of the Zero Point.
- Frame and Floor positions are given to centre of webs.
- Bulkhead positions are given to centre of bulkhead plating.
- Tube diameters refer to outside diameter (followed by wall thickness) unless otherwise noted.
- Anode inserts are placed fore-&-aft to come halfway between floors., or floors and frames.
- Inserts are placed athwartships to be equally each side of the stringer they interrupt.
- Inserts are designed to suit M G Duff ZD55 Disc Anodes. In use, the anode should protrude about 2mm proud of hull.
- It is recommended that the anodes be to hand before fabricating inserts, so that insert dimensions can be checked.
- In addition to the 8 ZD55 anodes, on the hull two ZD56 button anodes will be fitted to the rudder (see rudder drawings).
- Stern gear should be bonded to engine with flexible bridge over aquadrive unit to ensure electrical continuity.
- Anode inserts should be painted with hull, but no paint must fall on anodes themselves.
- Do not use antifouling paints containing metallic copper.
- Anodes are bedded in flexible mastic in inserts - but do not get mastic down tapped fixing boss as this provides the electrical connection.

<b>Whisstock</b> boats and boat plans support@whisstock.com	Scale 1/10 & 1/2
	Date 30/05/2010
<b>Boat 044</b> <b>Anode Inserts</b>	Plan No. 044/009/012
	Issue No. 01 web
Drawing: 915 x 305 - 36" x 12"	

© Bmarkweb Ltd 2010 All Rights Reserved