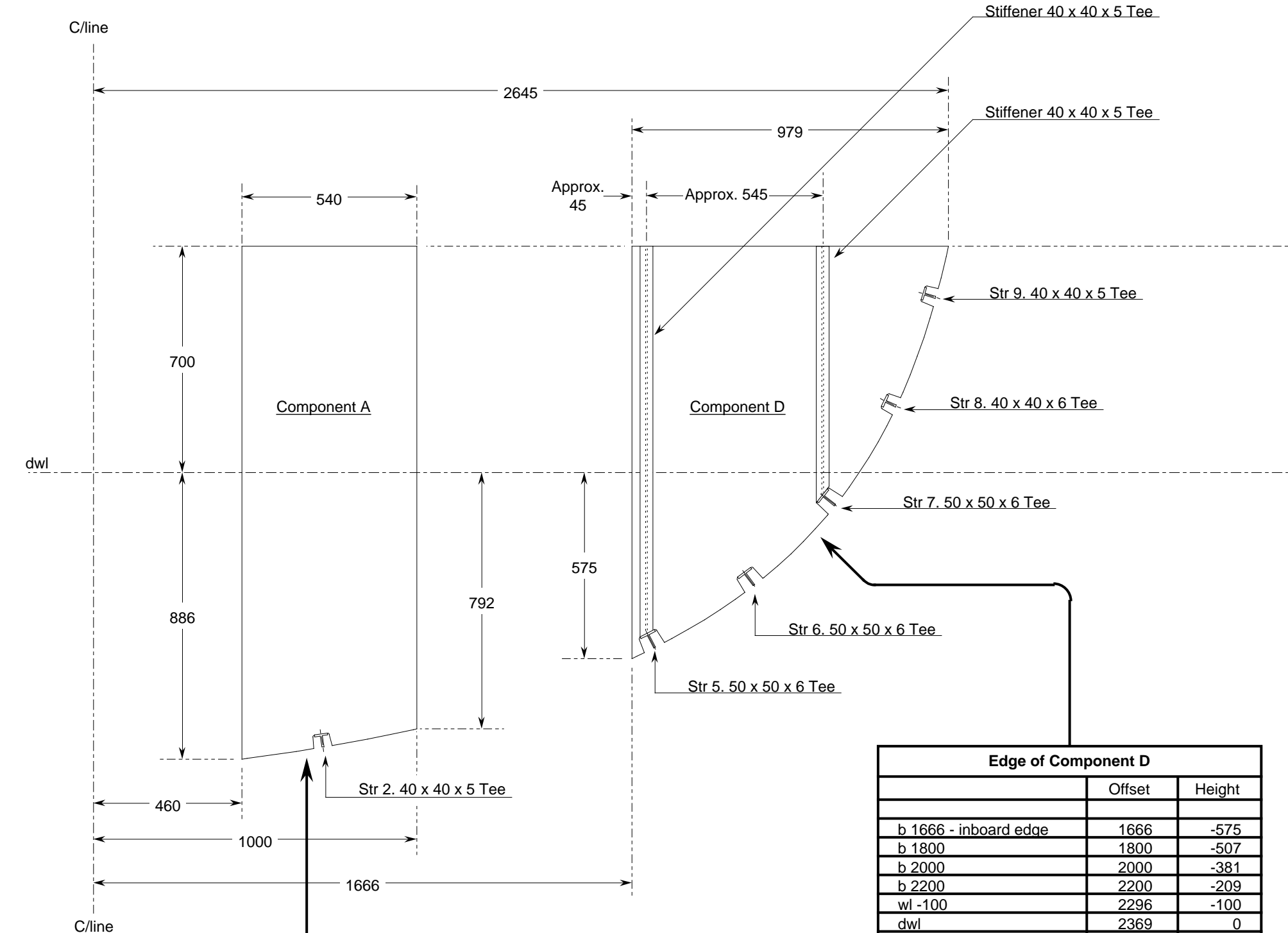


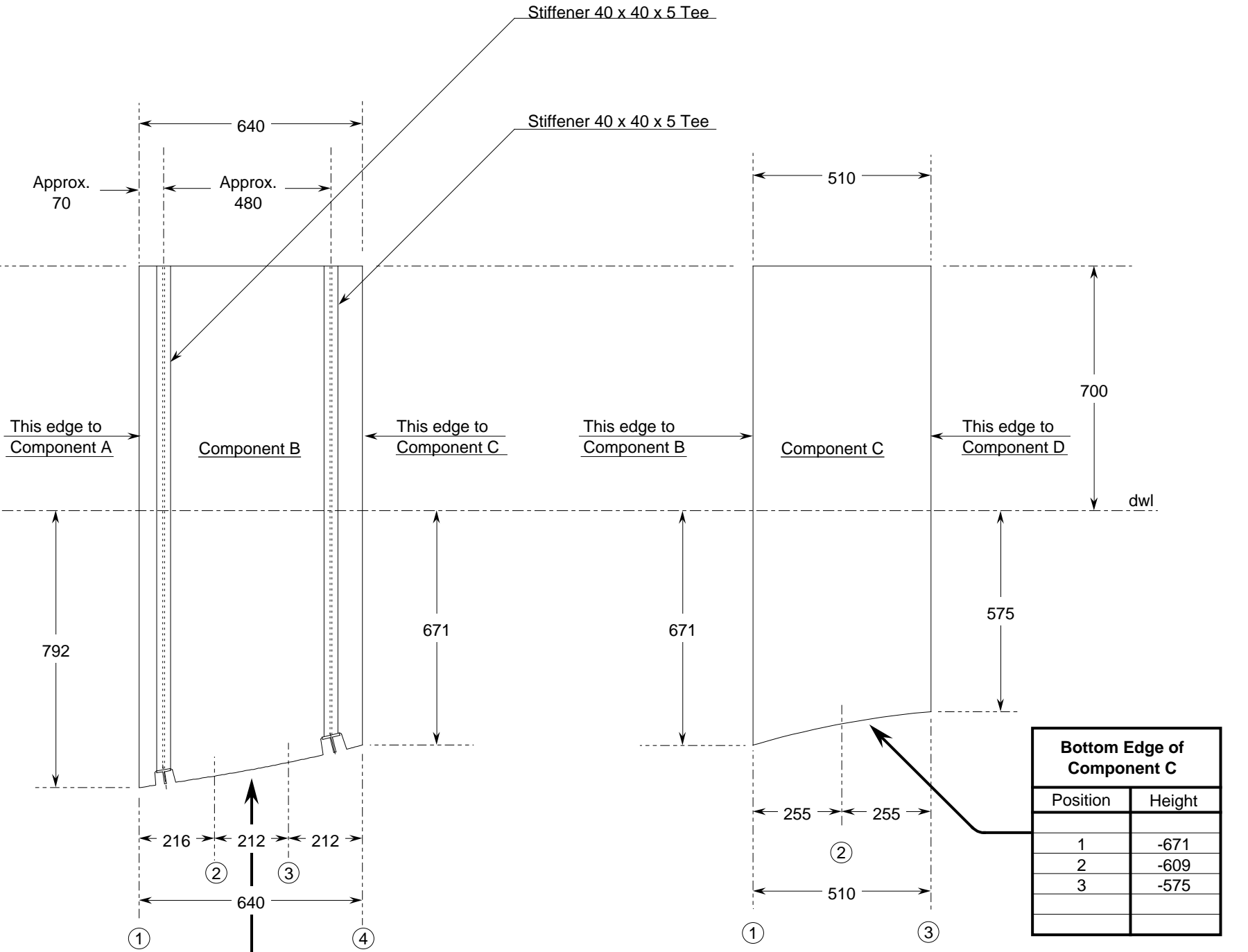
GENERAL GEOMETRY OF PARTITIONS



COMPONENTS A & D

Bottom Edge of Component A		
Offset	Height	
b 460 - inboard edge	460	-886
b 600	600	-866
b 800	800	-833
b 1000 - outboard edge	1000	-792

Edge of Component D		
	Offset	Height
b 1666 - inboard edge	1666	-575
b 1800	1800	-507
b 2000	2000	-381
b 2200	2200	-209
wl -100	2296	-100
dwl	2369	0
ll 100	2431	100
ll 300	2526	300
ll 500	2595	500
ll 700	2645	700



COMPONENT B
ACTUAL SIZE (I.E. VIEWED SQUARE ON)

Bottom Edge of Component B	
Position	Height
1	-792
2	-759
3	-720
4	-671

Bottom Edge of Component C	
Position	Height
1	-671
2	-609
3	-575

COMPONENT C
DEVELOPED (I.E. FLAT) SHAPE

- Notes:**
- All measurements and dimensions are in millimetres unless noted otherwise.
 - The Zero Point is the intersection of the Datum Waterline (marked "dwl") and the forefoot.
 - The centreline is marked " C/line ".
 - Offsets are measured about centreline.
 - Heights are measured above or below (marked "-") the dwl.
 - Positions are measured forward and aft (marked "-") of the Zero Point.
 - Frame and Floor positions are given to centre of webs.
 - Bulkhead positions are given to centre of bulkhead plating.
 - Tube diameters refer to outside diameter (followed by wall thickness) unless otherwise noted.
 - Partition is all 3mm plate.
 - Partition is in four components - A, B, C & D.
 - Derive position of cut-outs for stringers in components A, B & D from boat.
 - Fit 3mm collars to stringer cut-outs after components are fitted in place.
 - Stiffeners (40 x 40 x 5 Tee) are intended to coincide with stringers - adjust positions as required by actual stringer positions.
 - Component C is rolled to a radius of 740mm.
 - Additional stiffening will be provided around top edge by saloon sole structure.
 - Partition is not a primary structure but it is part of the watertight engine room envelope. Light double fillet welds to surrounding structures all that is required (T_{max.} = 2.5mm).

	Boat 044 Engine Room Partitions Aft Stbd Steps	Scale 1/10 Date 30/05/2010 Plan No. 044/009/005 Issue No. 01 web
	support@whisstock.com Drawing: 915 x 305 - 36" x 12"	© Bmarkweb Ltd 2010 All Rights Reserved