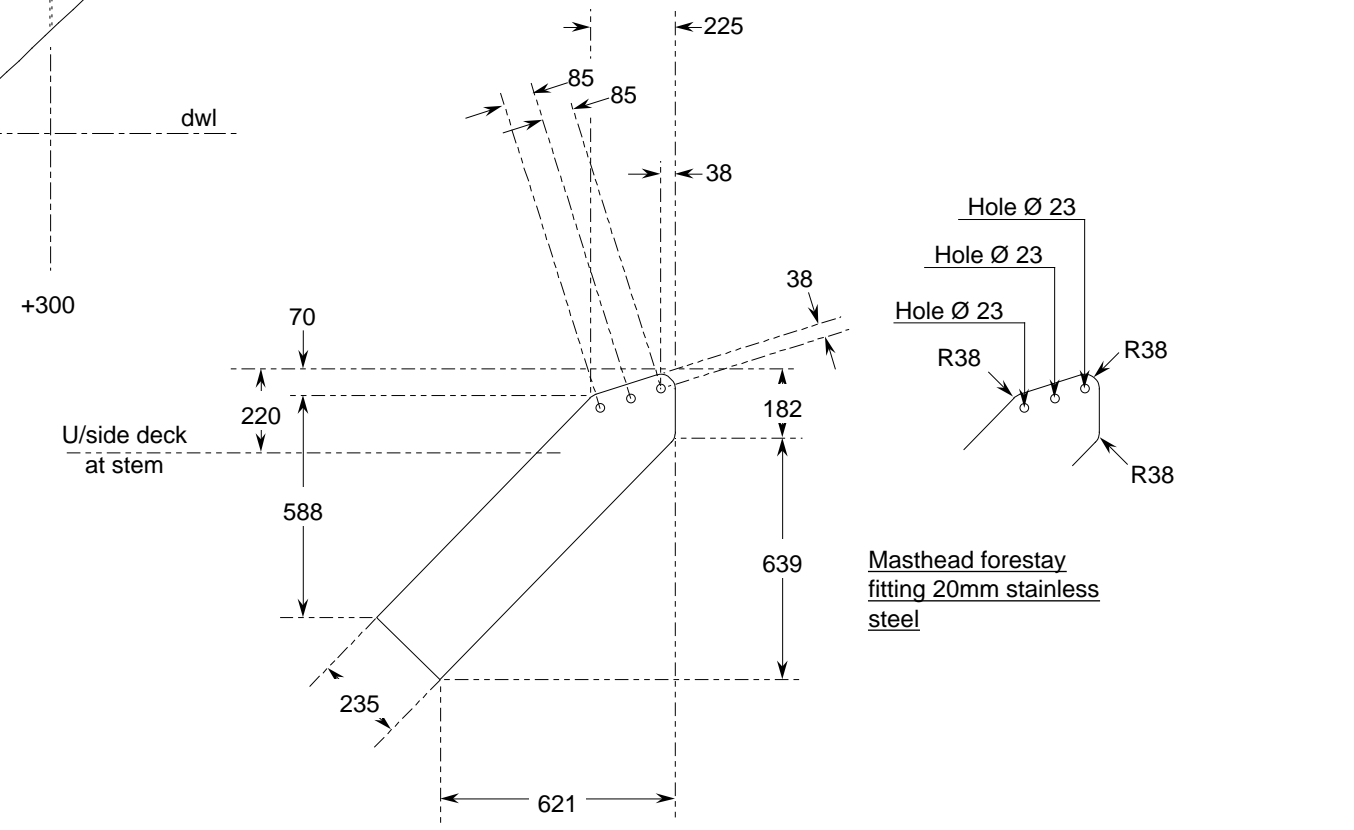
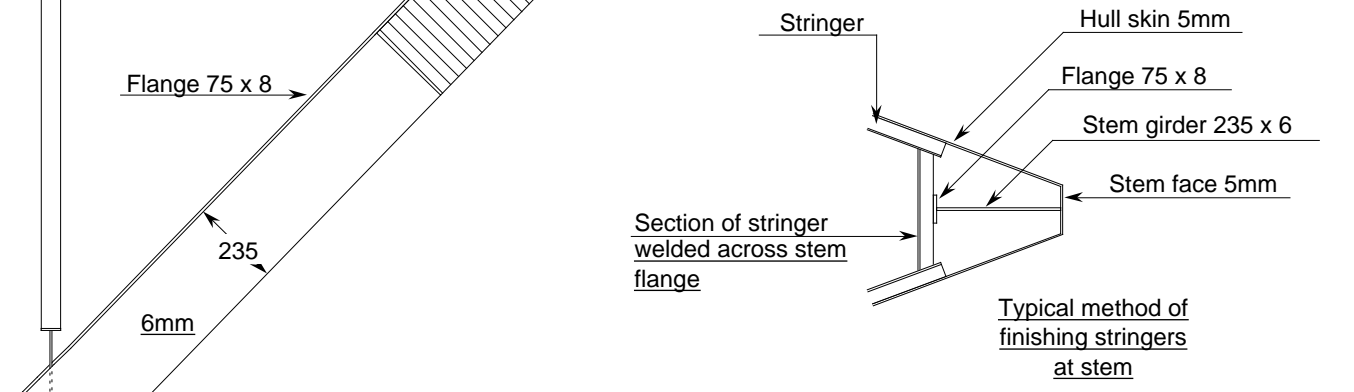



- Notes:**
1. All measurements and dimensions are in millimetres unless noted otherwise.
 2. The Zero Point is the intersection of the Datum Waterline (marked "dwl") and the forefoot.
 3. The centreline is marked "C/line".
 4. Offsets are measured about centreline.
 5. Heights are measured above or below (marked "-") the dwl.
 6. Positions are measured forward and aft (marked "-") of the Zero Point.
 7. Frame and Floor positions are given to centre of webs.
 8. Bulkhead positions are given to centre of bulkhead plating.
 9. For clarity, stringers are not shown.
 10. Hull is plated to dwl+150 with 5mm grade 50A, with the exception of horn strip from approx -11350 to transom, approx 400mm wide each side of centreline, which is 6mm Grade 50A. Above dwl+150 hull is plated with 4mm Grade 50A. Stem and transom are 5mm grade 50A.





Whisstock
boats and boat plans

support@whisstock.com

Boat 044 Longitudinal Structures Profile View	Scale	1/20
	Date	30/05/2010
	Plan No.	044/003/001
	Issue No.	01 web
Drawing: 1118 x 305 – 44" x 12"		

© Bmarkweb Ltd 2010 All Rights Reserved